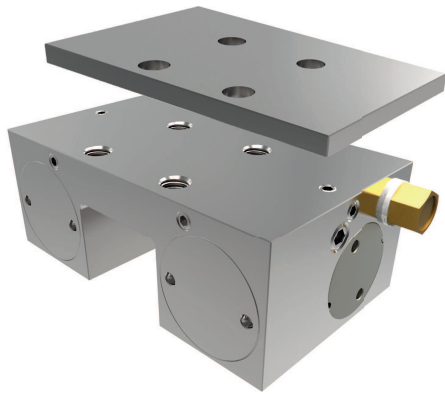


# CLAMPING ELEMENTS SERIES MK

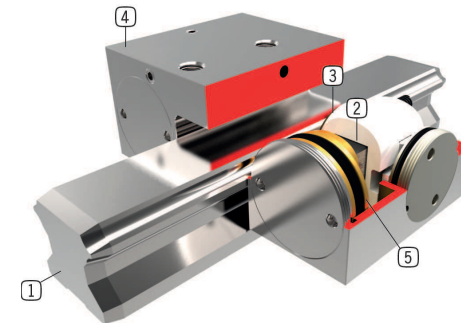
## ▶ PRODUCT ADVANTAGES

- ▶ **broad range of products**  
For all common profile rail guides
- ▶ **Energize to close (NO)**  
Closing with pressure
- ▶ **high durability**  
Up to 5 million static clamping cycles



## ▶ TECHNICAL DETAILS

- ① **Profile rail guide**  
- Available for all common profile rail guides
- ② **Wedge-type gear**  
- Power transmission between piston and clamping jaw
- ③ **Clamping jaw**  
- Pressed at the free surfaces of the profile rail guide
- ④ **housing**  
- chemically nickel plated steel
- ⑤ **Pneumatic piston**  
- The piston moves the wedge-type gear longitudinally



## ▶ INFORMATION ON THE PRODUCTS

### APPLICATION SCENARIOS

- ▶ **Positioning of axes**
- ▶ **Fixing of vertical axes**
- ▶ **Positioning of lifting devices**

### FURTHER INFORMATION

- ▶ **Adapter plate**  
In addition, an adapter plate might have to be ordered as height compensation depending on the height of the runner block (dimension D).
- ▶ **Special variants on request, e.g.**  
With proximity switch monitoring  
With additional air connection (from above, from the front)

## ▶ INFORMATION ON THE SERIES

### TECHNICAL DATA

Rail size	12-100 mm
Holding force	350-2250
pressure min.	3
pressure max.	6
Spring-loaded energy storage	inexistent
PLUS connection	no
Clamping cycles	up to 5 million
Braking cycles	not suitable
Operation	pneumatic



### ▶ Technical Information

All information just a click away at: [www.zimmer-group.de](http://www.zimmer-group.de)  
Find data, illustrations, 3D models and operating instructions for your installation size using the order number for your desired product.  
Quick, clear and always current.