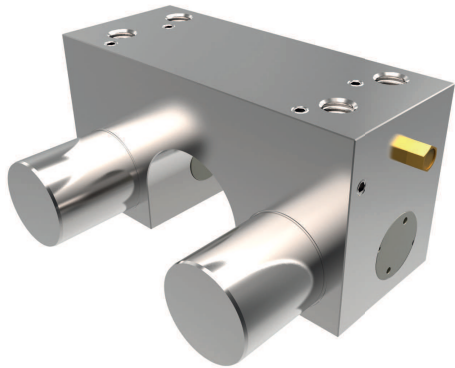


CLAMPING ELEMENTS SERIES MKRS

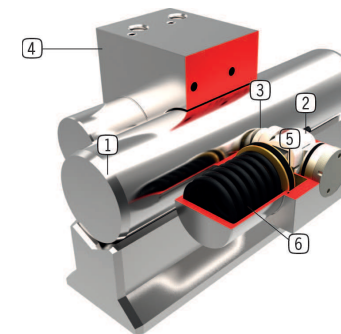
▶ PRODUCT ADVANTAGES

- ▶ **Independent of the manufacturer**
For circular guides and shaft guides
- ▶ **Energize to open (NC)**
through spring-loaded energy storage
- ▶ **high durability**
Up to 5 million static clamping cycles
- ▶ **Safety element**
Safe clamping in case of energy failure



▶ TECHNICAL DETAILS

- ① **Circular guide**
- Compatible with circular and shaft guides
- ② **Wedge-type gear**
- Power transmission between piston and clamping jaw
- ③ **Clamping jaw**
- Pressed at the circular guide
- ④ **housing**
- chemically nickel plated steel
- ⑤ **Pneumatic piston**
- The piston moves the wedge-type gear longitudinally
- ⑥ **Spring-loaded energy storage**
- For non-pressurized closing of the clamping unit



▶ INFORMATION ON THE PRODUCTS

APPLICATION SCENARIOS

- ▶ **Clamping in case of pressure drop**
- ▶ **Clamping without energy requirement**

FURTHER INFORMATION

- ▶ **Special variants on request, e.g.**
 - With proximity switch monitoring
 - With low opening pressure (3.0 bar or 4.0 bar)
 - With additional air connection (from above, from the front)

▶ INFORMATION ON THE SERIES

TECHNICAL DATA

| | |
|------------------------------|-----------------|
| incident wave quantity | 12-60 mm |
| Holding force | 350-1700 |
| pressure min. | 5.5 |
| pressure max. | 6 |
| Spring-loaded energy storage | existing |
| PLUS connection | no |
| Clamping cycles | up to 5 million |
| Braking cycles | not suitable |
| Operation | pneumatic |



▶ Technical Information

All information just a click away at: www.zimmer-group.de
Find data, illustrations, 3D models and operating instructions for your installation size using the order number for your desired product.
Quick, clear and always current.