

Human/machine interface

Monitors, keyboards



Power pack

for TFT monitor and Premium TFT 17", IP 69K

- With IEC 320 socket,
 - With connection cable (1.5 m) and connector for connecting to the TFT monitor.
- Dimensions: 107 x 30 x 59 mm.

Technical specifications:

Input voltage: 100 – 240 V AC
Output voltage: 12 V DC

Packs of	Model No. SM
1	6450.050

Material:

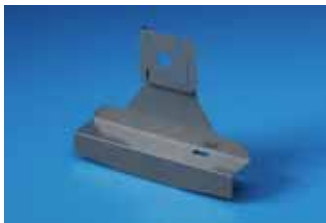
Enclosure: Plastic



Connection cable

for power pack
With IEC connector at one end,
length: 1.5 m.

Packs of	Model No. SM
1	6450.060



TFT holder

for the attachment of TFTs up to 20.1" prepared for the external mounting of:

- VESA 75 or 100 rigid
 - VESA 75 and tilt adjustment via IW 6902.670 (page 243)
- Enclosure attachments CP-S (page 242) or CP-L 120 x 65 mm (page 251)
- Enclosure attachments on the horizontal support arm CP-S or CP-L 120 x 65 mm, for mounting on the vertical support arm via tilt adjuster IW 6902.670

Dimensions in mm	Model No. SM
477 x 372 x 110.5	2383.030

- Support for keyboards SM 2383.000 (page 1140) via enclosure surface connector SM 2383.010 (page 1118)
 - Utility shelf CP 6514.100 (page 1123)
 - U handle CP 6107.100 (page 1117)
 - U handle CP 6107.200 (page 1117)
- via marked points
- Connector gland SZ 2400.300/500 (page 1057) as strain relief for the connection cable

Material:

Sheet steel, spray-finished in RAL 7024

