

Keyboards, supports and drawers

Mousepad support, vertically hinged

For mounting on the left/right, beneath the keyboard support. Latches home automatically, both when retracted and extended. With mounting holes for mouse holder 2382.000.

With cut-outs for cable routing and holes for attachment via cable ties, for fast assembly 2597.000.

Material:

- Sheet steel

Surface finish:

- Zinc-plated

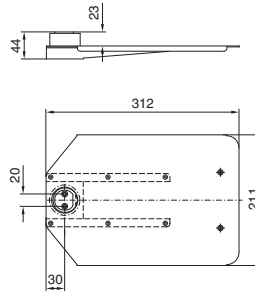
Supply includes:

- Assembly parts and mousepad, stuck on with adhesive

Packs of	Model No.
1 pc(s).	2383.020

+ Accessories:

- Mouse holder, see page 713
- Cable ties, see page 667



Mouse holder

To fit mousepad support and for secure accommodation of a standard mouse.

Material:

- Sheet steel

Surface finish:

- Zinc-plated

Supply includes:

- Assembly parts

Weight kg	Packs of	Model No.
0.3	1 pc(s).	2382.000

! Also required:

- Mousepad support, see page 712
- or
- Mousepad support, vertically hinged, see page 713



Paper removal flap

For installation in surfaces

Facilitates easy removal of pages from the printer without opening the enclosure door. Acrylic glazed flap with magnetic lock.

Paper removal flap	Colour RAL	Packs of	Model No.
DIN A4	7015	1 pc(s).	6903.200

