



Cam lock HD

Hygienic Design variant for easy, safe cleaning.

Applications:

- Compact enclosures AE stainless steel (except AE 1017.XXX and AE 1019.XXX).
- May be integrated into customised applications, e.g. covers of machine panels.

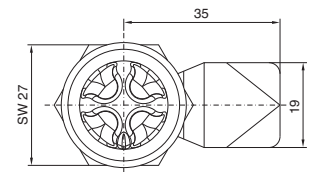
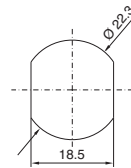
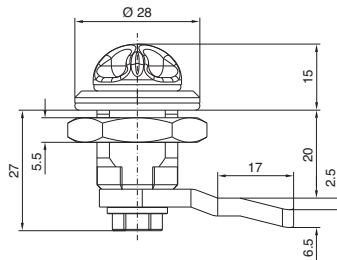
Material:

Stainless steel 1.4404 (AISI 316L)

Packs of	Model No. HD
1	2304.010

+ Accessories:

Enclosure key HD, see Cat. 32, page 301.



Lock insert HD

Version F

Hygienic Design version.

Applications:

- Baying system TS 8
- PC enclosure systems, based on TS 8
- Industrial Workstations, based on TS 8
- Comfort handles for lock inserts

Material:

Stainless steel 1.4404 (AISI 316L)

Packs of	Model No. HD
1	8611.400

Available from October 2008.

+ Accessories:

Enclosure key HD, see Cat. 32, page 301.



Sloped attachment HD

for TS 8

For retro-fitting individual or bayed TS 8 enclosures of sheet steel, spray-finished, or stainless steel.

Properties:

- Height, front: 35 mm.
- Roof projection, front: 8 mm.
- Maximum possible opening at the baying point to the neighbouring roof.

Protection category:

IP 55 to EN 60 529, complies with NEMA 12.

Supply includes:

Assembly parts and all required seals.

Version	Packs of	Model No. HD
Stainless steel 1.4301 (AISI 304), brushed, grain size 400	1	4000.039
Stainless steel 1.4404 (AISI 316L), brushed, grain size 400	1	4000.049
Sheet steel, spray-finished, RAL 7035	1	4000.059

Delivery times available on request.

Design code number

- - -

Roof tilt

- 1 - 30°
(EHEDG standard)
2 - 45°

Enclosure width mm¹⁾

Enclosure depth mm

Assembly (viewed from the front)

- 1 - for free-standing enclosure
2 - for bayed end enclosure, left²⁾
3 - for bayed end enclosure, right²⁾
4 - for bayed enclosure, centre²⁾

¹⁾ Max. 1200 mm

²⁾ Each with a T-section seal and connection accessories.

Example:

Sloped attachment HD, 30° roof tilt, for TS 8 free-standing enclosure with width x depth 800 x 600 mm.

- - -