

System accessories



Flex-Block trim panels, 100 mm, with brush strip

for Flex-Block corner pieces

For easy entry and exit of cables. For tool-free assembly. With symmetrical enclosure dimensions, trim panels are identical in the width and depth.

Material:

- Sheet steel

Colour:

- RAL 9005

Supply includes:

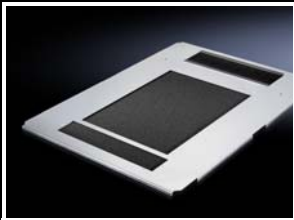
- 2 trim panels

Further technical information:

Available on the Internet

Height 100 mm

For enclosure width/depth mm	Packs of	Model No.
600	2 pc(s).	8100.605
800	2 pc(s).	8100.805
1000	2 pc(s).	8100.105
1200	2 pc(s).	8100.125



Gland plate, one-piece, vented for TS IT

To completely cover the open base assembly in one piece. Perforated over the entire surface. This allows cold air to flow in from the base or base/plinth area. This ensures the inflow of cold air, particularly in enclosures with rack climate control. With a brush strip at the rear for user-friendly cable entry from below across the entire enclosure width. Integral guides permit simple accommodation of a filter mat, which is also readily replaced.

Material:

- Sheet steel

Surface finish:

- Zinc-plated

Supply includes:

- Gland plate, one-piece, vented, with cable entry at the rear
- Filter mat
- Assembly parts

For enclosure width mm	For enclosure depth mm	Packs of	Model No.
800	600	1 pc(s).	5502.310
800	800	1 pc(s).	5502.330
600	1000	1 pc(s).	5502.340
800	1000	1 pc(s).	5502.350
600	1200	1 pc(s).	5502.360
800	1200	1 pc(s).	5502.370



Also required:

- Base mount, see Catalogue 34, page 524



Accessories:

- Filter mat, see page 74



Filter mat

for gland plate, one-piece, vented

The filter mat is easily cut to size according to the required cut-out.

Material:

- PPI 35-5/polyamide

To fit enclosure type	Packs of	Model No.
TS IT	1 pc(s).	5502.380