

1

Flachführungsleisten, selbstschmierend

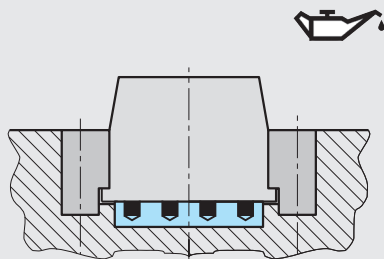


Z4165-

Mat.: Bronze
190-220 HB S10/3000
< 150 °C

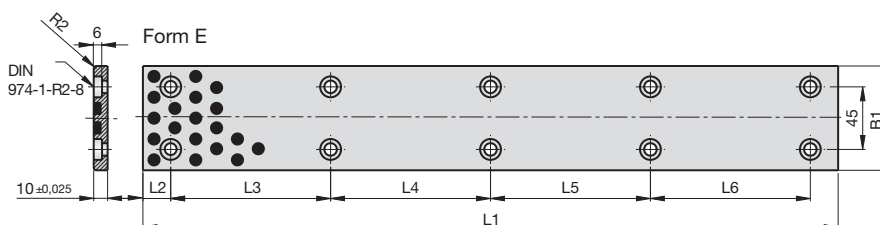
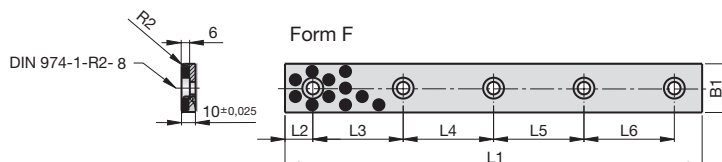
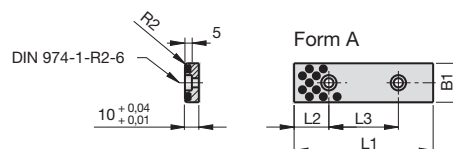


Z4165-B1-L1

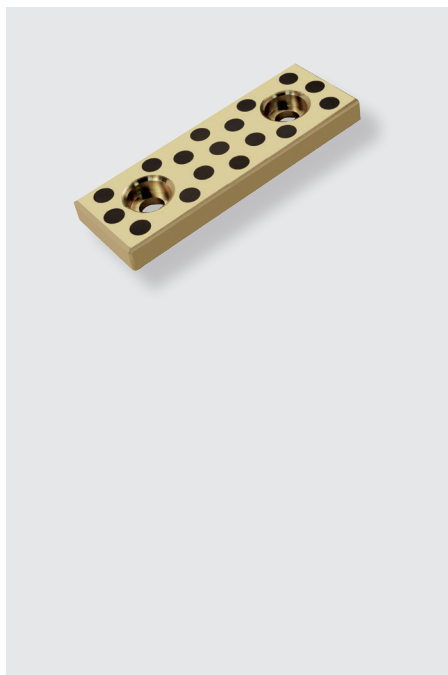


Flat guide strips, self-lubricating

Barres de guidage plate, autolubrifiantes



| B1 | L1 | Form | L2 | L3 | L4 | L5 | L6 | DIN 974-1-R2- | Bohrungen Drillings Perçages |
|----|-----|------|----|-----|----|----|----|---------------|------------------------------------|
| 18 | 75 | A | 15 | 45 | - | - | - | 6 | 2 |
| 18 | 100 | A | 25 | 50 | - | - | - | 6 | 2 |
| 18 | 125 | A | 25 | 75 | - | - | - | 6 | 2 |
| 18 | 150 | A | 25 | 100 | - | - | - | 6 | 2 |
| 28 | 75 | A | 15 | 45 | - | - | - | 6 | 2 |
| 28 | 100 | A | 25 | 50 | - | - | - | 6 | 2 |
| 28 | 125 | A | 25 | 75 | - | - | - | 6 | 2 |
| 28 | 150 | A | 25 | 100 | - | - | - | 6 | 2 |
| 35 | 100 | F | 20 | 60 | - | - | - | 8 | 2 |
| 35 | 150 | F | 20 | 55 | 55 | - | - | 8 | 3 |
| 35 | 200 | F | 20 | 55 | 50 | 55 | - | 8 | 4 |
| 35 | 250 | F | 20 | 70 | 70 | 70 | - | 8 | 4 |
| 35 | 300 | F | 20 | 65 | 65 | 65 | 65 | 8 | 5 |
| 35 | 350 | F | 20 | 80 | 75 | 75 | 80 | 8 | 5 |
| 38 | 75 | A | 15 | 45 | - | - | - | 6 | 2 |
| 38 | 100 | A | 25 | 50 | - | - | - | 6 | 2 |
| 38 | 125 | A | 25 | 75 | - | - | - | 6 | 2 |
| 38 | 150 | A | 25 | 100 | - | - | - | 6 | 2 |
| 48 | 75 | A | 15 | 45 | - | - | - | 6 | 2 |
| 48 | 100 | A | 25 | 50 | - | - | - | 6 | 2 |
| 48 | 125 | A | 25 | 75 | - | - | - | 6 | 2 |
| 48 | 150 | A | 25 | 100 | - | - | - | 6 | 2 |

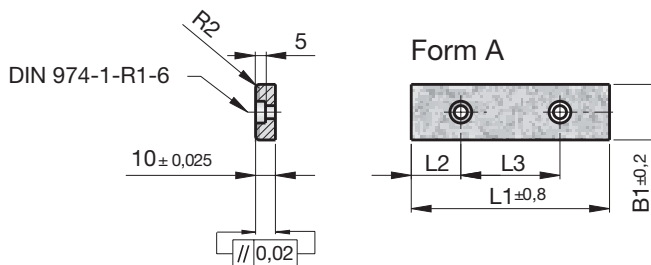
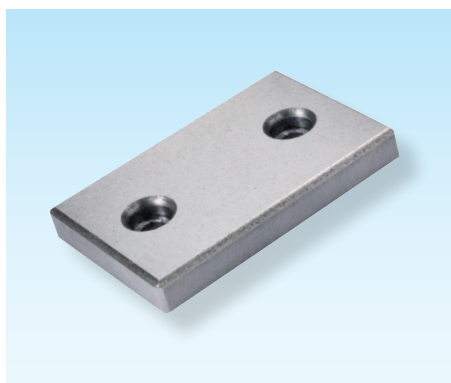


| B1 | L1 | Form | L2 | L3 | L4 | L5 | L6 | DIN 974 -1-R1- | Bohrungen Drillings Perçages |
|----|-----|------|----|-----|-----|-----|-----|-------------------|------------------------------------|
| 50 | 100 | F | 20 | 60 | - | - | - | 8 | 2 |
| 50 | 150 | F | 20 | 55 | 55 | - | - | 8 | 3 |
| 50 | 200 | F | 20 | 55 | 50 | 55 | - | 8 | 4 |
| 50 | 250 | F | 20 | 70 | 70 | 70 | - | 8 | 4 |
| 50 | 300 | F | 20 | 65 | 65 | 65 | 65 | 8 | 5 |
| 50 | 350 | F | 20 | 80 | 75 | 75 | 80 | 8 | 5 |
| 50 | 400 | F | 20 | 90 | 90 | 90 | 90 | 8 | 5 |
| 75 | 150 | E | 20 | 110 | - | - | - | 8 | 4 |
| 75 | 200 | E | 20 | 80 | 80 | - | - | 8 | 6 |
| 75 | 250 | E | 20 | 105 | 105 | - | - | 8 | 6 |
| 75 | 300 | E | 20 | 85 | 90 | 85 | - | 8 | 8 |
| 75 | 400 | E | 20 | 120 | 120 | 120 | - | 8 | 8 |
| 75 | 500 | E | 20 | 115 | 115 | 115 | 115 | 8 | 10 |

Flachführungsleisten, selbstschmierend

Flat guide strips, self-lubricating

Barres de guidage plate, autolubrifiantes

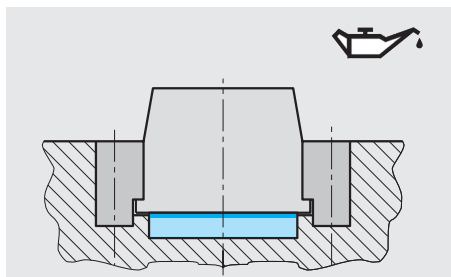


Z3865-

Mat.: SNS Sintermetall/
Sintered metal/Métal
fritté



Z3865-B1-L1



| B1 | L1 | Form | L2 | L3 | Bohrungen Drillings Perçages |
|----|-----|------|----|-----|------------------------------------|
| 18 | 75 | A | 15 | 45 | 2 |
| 18 | 150 | A | 25 | 100 | 2 |
| 28 | 150 | A | 25 | 100 | 2 |
| 48 | 75 | A | 15 | 45 | 2 |
| 48 | 100 | A | 25 | 50 | 2 |
| 48 | 125 | A | 25 | 75 | 2 |
| 48 | 150 | A | 25 | 100 | 2 |