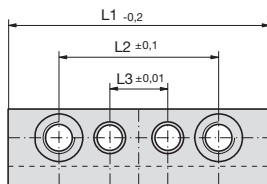


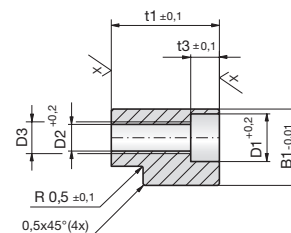
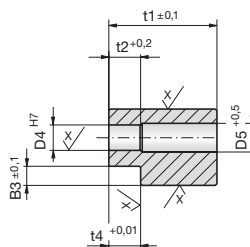
### Führungsleisten

### Guide strips

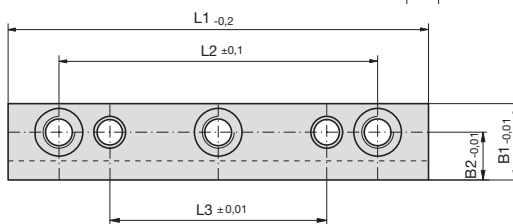
### Barres de guidage



Type A



$$X/\sqrt{Rz} = \sqrt{Rz} 6,3$$



Type B

Z4242-

Mat.: ST  
58 +2HRC

Z4242-B1-t1-L1



5

B1	t1	L1	Type	B2	B3	t2	t3	t4	L2	L3	D1	D2	D3	D4	D5
15	16	50	A	9	3	–	5,7	5	30	10	10	5,3	M6	4	–
15	16	60	A	9	3	–	5,7	5	40	20	10	5,3	M6	4	–
15	16	70	B	9	3	–	5,7	5	50	30	10	5,3	M6	4	–
15	16	75	B	9	3	–	5,7	5	60	40	10	5,3	M6	4	–
15	16	80	B	9	3	–	5,7	5	60	40	10	5,3	M6	4	–
15	16	90	B	9	3	–	5,7	5	70	50	10	5,3	M6	4	–
18	30	80	A	11	4	12	6,8	8	56	32	11	6,8	M8	6	7
18	30	100	A	11	4	12	6,8	8	76	52	11	6,8	M8	6	7
18	30	120	B	11	4	12	6,8	8	96	72	11	6,8	M8	6	7
18	30	140	B	11	4	12	6,8	8	116	92	11	6,8	M8	6	7
18	30	160	B	11	4	12	6,8	8	136	112	11	6,8	M8	6	7
24	46	100	A	15	6	12	9,0	10	68	36	15	8,5	M10	8	9
24	46	120	A	15	6	12	9,0	10	88	56	15	8,5	M10	8	9
24	46	140	B	15	6	12	9,0	10	108	76	15	8,5	M10	8	9
24	46	160	B	15	6	12	9,0	10	128	96	15	8,5	M10	8	9
24	46	180	B	15	6	12	9,0	10	148	116	15	8,5	M10	8	9

