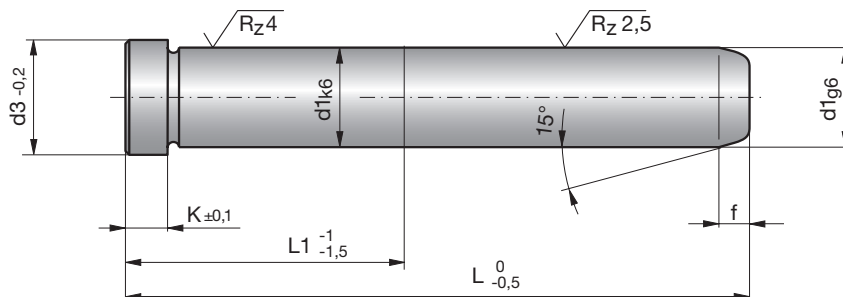
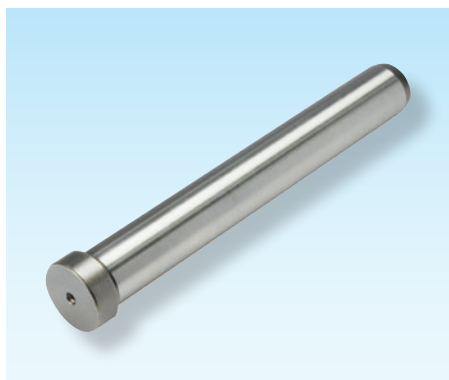


1

## Führungssäulen

## Guide pillars

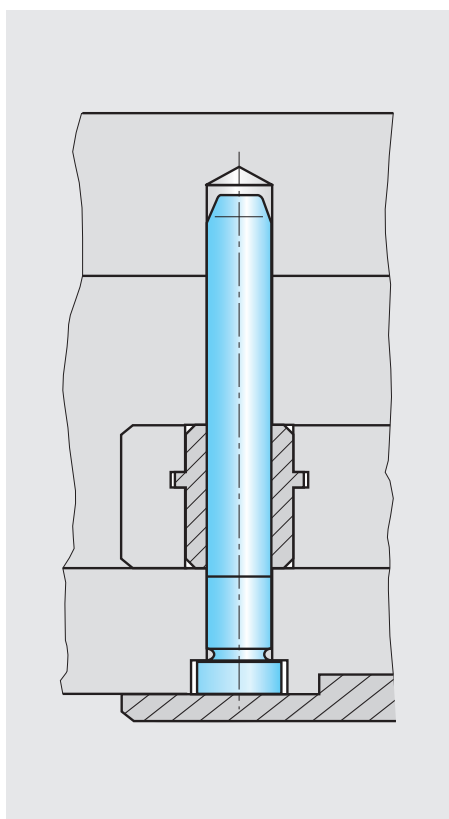
## Colonnes de guidage



Z66-

Mat.: 1.7131  
58+4HRC

Z66-d1-L



d1	L	L1	d3	K	f	d1	L	L1	d3	K	f	
8	40	16	11	3	2,5	20	250	50	25	10	5,0	
	50	16	11	3	2,5		25	80	25	32	12,5	5,0
	63	16	11	3	2,5			100	25	32	12,5	5,0
	80	20	11	3	2,5			125	32	32	12,5	5,0
	100	25	11	3	2,5			160	32	32	12,5	5,0
10	50	16	14	4	3,5	200	40	32	12,5	5,0		
	63	16	14	4	3,5	250	50	32	12,5	5,0		
	80	20	14	4	3,5	32	100	40	40	12,5	5,0	
	100	25	14	4	3,5		125	40	40	12,5	5,0	
12	50	20	16	6	3,5	160	50	40	12,5	5,0		
	63	20	16	6	3,5	200	50	40	12,5	5,0		
	80	25	16	6	3,5	250	50	40	12,5	5,0		
	100	25	16	6	3,5	40	160	50	48	16	8,0	
	125	32	16	6	3,5		200	50	48	16	8,0	
16	63	25	20	8	4,0	250	63	48	16	8,0		
	80	25	20	8	4,0	50	315	63	48	16	8,0	
	100	25	20	8	4,0		400	80	48	16	8,0	
	125	32	20	8	4,0	63	160	63	58	16	10,0	
	160	32	20	8	4,0		200	63	58	16	10,0	
200	40	20	8	4,0	250		80	58	16	10,0		
20	63	25	25	10	5,0	315	80	58	16	10,0		
	80	25	25	10	5,0	400	100	58	16	10,0		
	100	25	25	10	5,0	50	200	63	70	16	12,5	
	125	32	25	10	5,0		250	80	70	16	12,5	
	160	32	25	10	5,0		315	80	70	16	12,5	
200	40	25	10	5,0	400	100	70	16	12,5			