

Combi-Säulengestelle mit oben hängenden Säulen

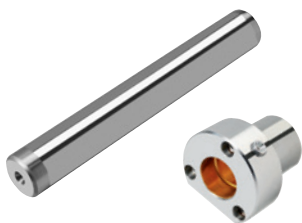
Combi-die sets with aerial-mounted columns

Combi-blocs à colonnes avec colonnes montées en haut

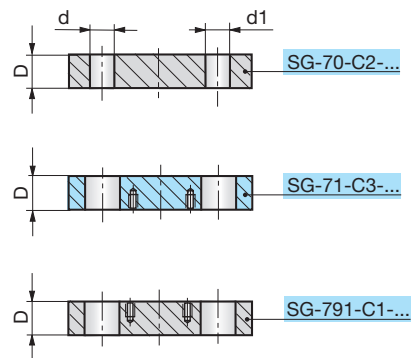
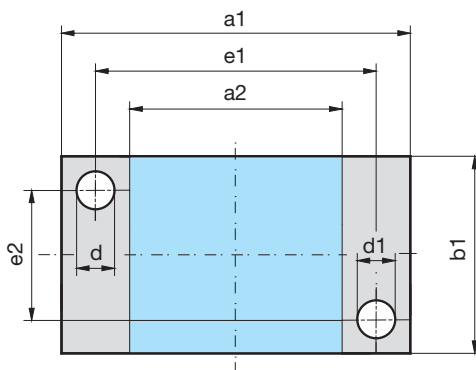
Auswahl Gestellplatten

Selection die set plates

Sélection des plaques de bloc à colonnes



siehe Seite
see page 4.60
voir page



4



SG-791-C1-
b1-a1-D-Mat

Mat.: 1.1730/C45W

Mat.: 3.4365 (AL)
auf Anfrage / on request / sur demande

| SG | b1 | a1 | C1 D | C2 D | C3 D | a2 | e1 | e2 | Ød | Ød1 |
|-------------------------------------|-----|---------|---------|---------|---------|-----|-----|-----|----|-----|
| SG-791-C1/ SG-70-C2/ SG-71-C3 | 156 | 156 | 37 | 27 / 37 | 27 | 62 | 100 | 100 | 19 | 20 |
| | | 196 | 37 | 27 / 37 | 27 | 102 | 140 | 100 | 19 | 20 |
| | | 246 | 37 | 27 / 37 | 27 | 152 | 190 | 100 | 19 | 20 |
| | | 311 | 37 | 27 / 37 | 27 | 217 | 255 | 100 | 19 | 20 |
| | 196 | 196 | 37 | 27 / 37 | 27 | 84 | 132 | 132 | 24 | 25 |
| | | 246 | 37 | 27 / 37 | 27 | 134 | 182 | 132 | 24 | 25 |
| | | 311 | 37 | 27 / 37 | 27 | 199 | 247 | 132 | 24 | 25 |
| | | 396 | 37 | 27 / 37 | 27 | 284 | 332 | 132 | 24 | 25 |
| | | 496 | 47 | 37 / 47 | 27 | 366 | 424 | 124 | 30 | 32 |
| | | 626 | 47 | 37 / 47 | 27 | 496 | 554 | 124 | 30 | 32 |
| | 246 | 246 | 47 | 37 / 47 | 27 | 116 | 174 | 174 | 30 | 32 |
| | | 311 | 47 | 37 / 47 | 27 | 181 | 239 | 174 | 30 | 32 |
| | | 396 | 47 | 37 / 47 | 27 | 266 | 324 | 174 | 30 | 32 |
| | | 496 | 47 | 37 / 47 | 27 | 366 | 424 | 174 | 30 | 32 |
| | | 626 | 47 / 57 | 47 / 57 | 27 | 474 | 542 | 162 | 38 | 40 |
| | | 706 | 47 / 57 | 47 / 57 | 27 | 554 | 622 | 162 | 38 | 40 |
| | 311 | 311 | 47 | 37 / 47 | 27 | 181 | 239 | 239 | 30 | 32 |
| | | 396 | 47 | 37 / 47 | 27 | 266 | 324 | 239 | 30 | 32 |
| | | 496 | 47 / 57 | 47 / 57 | 27 | 344 | 412 | 227 | 38 | 40 |
| | | 626 | 47 / 57 | 47 / 57 | 27 | 474 | 542 | 227 | 38 | 40 |
| | | 706 | 47 / 57 | 47 / 57 | 27 | 554 | 622 | 227 | 38 | 40 |
| | | 796 | 47 / 57 | 47 / 57 | 27 | 644 | 712 | 227 | 38 | 40 |
| | 396 | 396 | 47 / 57 | 47 / 57 | 37 | 244 | 312 | 312 | 38 | 40 |
| | | 496 | 47 / 57 | 47 / 57 | 37 | 344 | 412 | 312 | 38 | 40 |
| 626 | | 57 / 67 | 57 / 67 | 37 | 452 | 530 | 300 | 48 | 50 | |
| 706 | | 57 / 67 | 57 / 67 | 37 | 532 | 610 | 300 | 48 | 50 | |
| 796 | | 57 / 67 | 57 / 67 | 37 | 622 | 700 | 300 | 48 | 50 | |
| 496 | 496 | 57 / 67 | 57 / 67 | 37 | 322 | 400 | 400 | 48 | 50 | |
| | 626 | 57 / 67 | 57 / 67 | 37 | 452 | 530 | 400 | 48 | 50 | |
| | 706 | 57 / 67 | 57 / 67 | 37 | 532 | 610 | 400 | 48 | 50 | |
| | 796 | 57 / 67 | 57 / 67 | 37 | 622 | 700 | 400 | 48 | 50 | |
| 626 | 626 | 57 / 67 | 57 / 67 | 37 | 452 | 530 | 530 | 48 | 50 | |
| | 706 | 57 / 67 | 57 / 67 | 37 | 532 | 610 | 530 | 48 | 50 | |
| | 796 | 57 / 67 | 57 / 67 | 37 | 622 | 700 | 530 | 48 | 50 | |