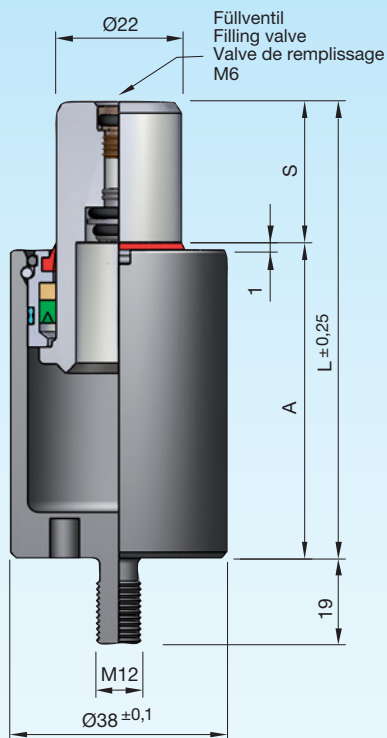


## Gasdruckfedern MICROserie

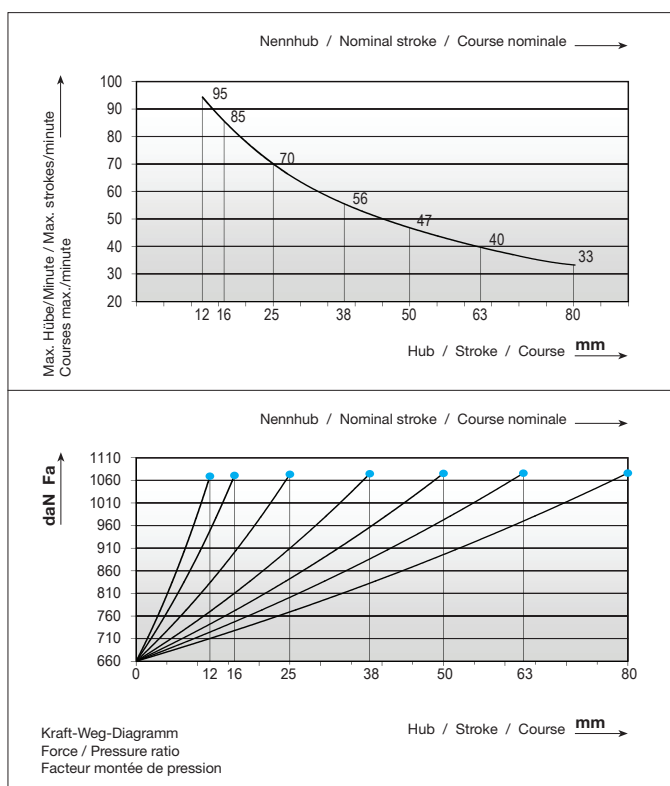
## Gas springs MICROseries

## Ressorts à gaz MICROsérie

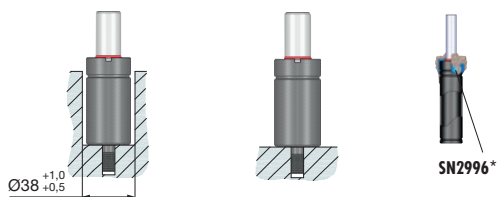


Druckmedium	Pressure medium	Médium de pression	<b>Stickstoff (N<sub>2</sub>)</b>
Max. Fülldruck	Max. filling pressure	Pression de rempl. max.	<b>175 bar</b>
Min. Fülldruck	Min. filling pressure	Pression de rempl. min.	<b>35 bar</b>
Max. Betriebs-temperatur	Max. working temperature	Température de service max.	<b>80 °C</b>
Temperaturabhängige Druckerhöhung	Pressure increase due to temperature	Accroissement de pression sous l'influence de la temp.	<b>0,33 %/1 °C</b>
Instandhaltungsset	Maintenance kit	Jeu de maintenance	<b>SN2990-MR38</b>
Max. Kolben-geschwindigkeit	Max. piston speed	Vitesse max. du piston	<b>1,2 m/s</b>

3



### Einbauvarianten / Installation variants / Variantes de montage



SN2808-R-660-		S	daN	daN	bar	A	L	V [l]	Fa [cm <sup>2</sup> ]	kg
SN2808-R-660-S		12	660	1080	175	42	54	0,012	3,80	0,28
		16	(±5%)	1080	175	46	62	0,016	3,80	0,30
		25		1080	175	55	80	0,025	3,80	0,33
		38		1085	175	68	106	0,037	3,80	0,39
		50		1085	175	80	130	0,049	3,80	0,43
		63		1085	175	93	156	0,062	3,80	0,48
		80		1085	175	110	190	0,079	3,80	0,55

S = Hub / Stroke / Course

bar = Fülldruck / Filling pressure / Pression de remplissage

\* **SN2996** = Seite / Page **2.3.254**