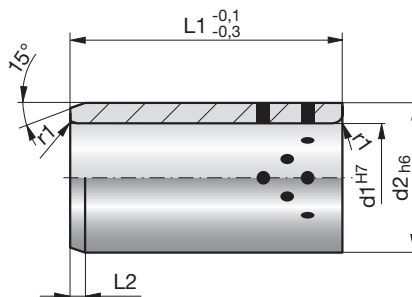


### Gleitführungsbuchsen mit Fest- schmierstoff, selbstschmierend

### Guide bushes with solid lubricant, self-lubricating

### Bagues pour guidage lisse avec lubrifiant solide, autolubrifiantes

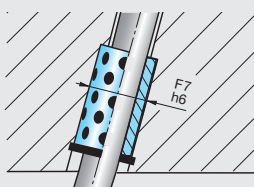
1



**SN1731-**

Mat.: Bronze  
190-220 HB S10/3000  
< 150 °C

SN1731-d1-L1

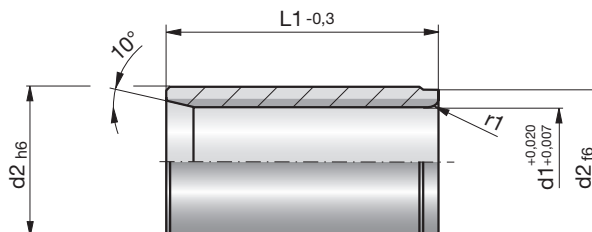
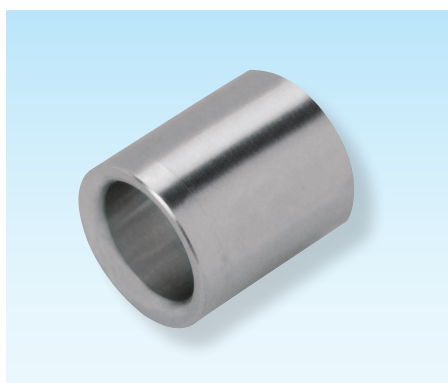


d1	L1	d2	L2	r1
20	25	28	4	0,75
20	40	28	4	0,75
25	30	33	4	0,75
25	50	33	4	0,75
30	35	38	4	0,75
30	50	38	4	0,75
35	40	44	4	0,75
35	60	44	4	0,75
40	40	50	4	1,50
40	70	50	4	1,50
45	50	60	4	1,50
45	80	60	4	1,50

### Gleitführungsbuchsen, selbstschmierend

### Guide bushes, self-lubricating

### Bagues pour guidage lisse, autolubrifiantes



**SN1732-**

Mat.: SNS Sintermetall/  
Sintered metal/Métal  
fritté

SN1732-d1-L1



d1	L1	d2	r1
19	32	28	3
19	60	28	3
20	32	28	3
20	60	28	3
24	35	35	3
24	60	35	3
25	35	35	3
25	60	35	3

D 3002A 07.2018