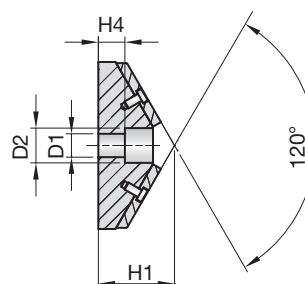
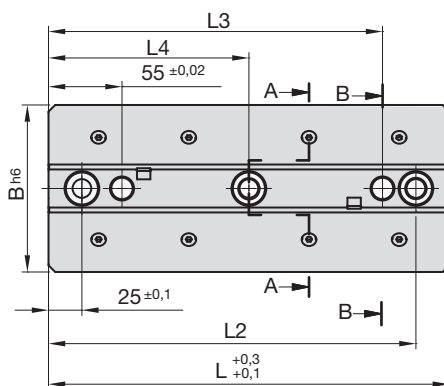
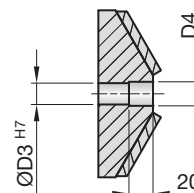
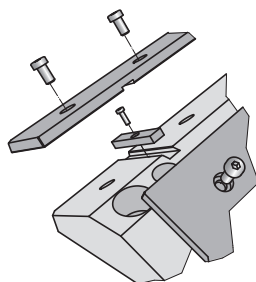


1

Gleitstück zu Prismenführung
≈ VDI 3357, VW-Norm 39D 952

Slider to prism guide ≈ VDI 3357,
VW-norm 39D 952

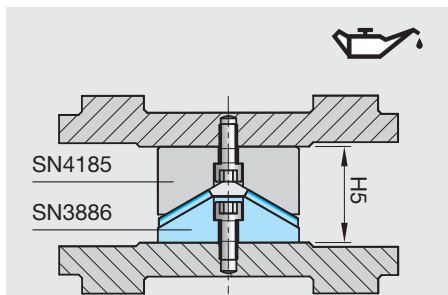
Pièce coulissante sur glissière prismatique
≈ VDI 3357, Norme de VW 39D 952



SN3886-

Mat.: ST + SNS
Sintermetall/Sintered
metal/Métal fritté

SN3886-B-H1-L



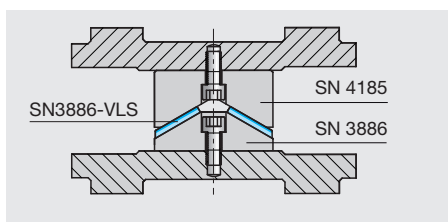
Abmessungen entsprechend VDI 3357
Dimensions according to VDI 3357
Mesurages conformément au VDI 3357

B	H1	L	L2	L3	L4	D1	D2	D3	D4	H4	H5	Bohrungen Drillings Perçages
65	47	150	125	100	-	13,5	20	12	14	18	65	2
65	47	200	175	150	-	13,5	20	12	14	18	65	2
65	47	250	225	200	125	13,5	20	12	14	18	65	3
65	47	300	275	250	150	13,5	20	12	14	18	65	3
125	57	150	125	100	-	17,5	26	16	18	18,5	85	2
125	57	200	175	150	-	17,5	26	16	18	18,5	85	2
125	57	250	225	200	125	17,5	26	16	18	18,5	85	3
125	57	300	275	250	150	17,5	26	16	18	18,5	85	3

SN3886-VLS-

Mat.: ST + SNS
Sintermetall/Sintered
metal/Métal fritté

SN3886-VLS-B-L



B	L	Verschleiss-Leisten-Satz für Wear plates - Set for Plaques de frottement - Set pour
25	150	SN3886-65-47-150
25	200	SN3886-65-47-200
25	250	SN3886-65-47-250
25	300	SN3886-65-47-300
55	150	SN3886-125-57-150
55	200	SN3886-125-57-200
55	250	SN3886-125-57-250
55	300	SN3886-125-57-300

D 3002A 07.2018