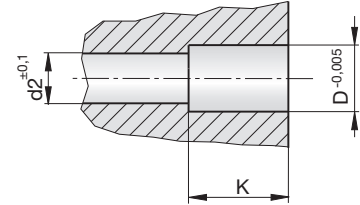
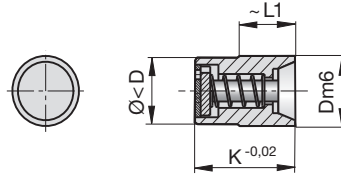
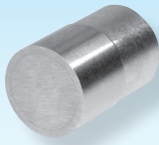


### Belüftungsventile

### Venting valves

### Souppapes



2

**Z5146-**

Mat.: 1.4031  
52 - 55 HRC

 Z5146-D



D	d2	K	L1
8	5	14	7
12	8	18	9
18	8	22	12

max. 200 °C  
2-9 bar

Druckluft  
Compressed air  
Air comprimé

