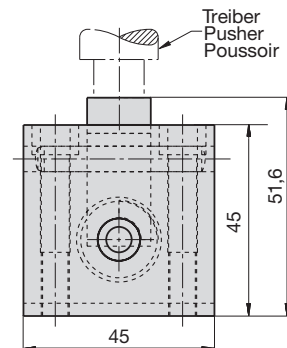
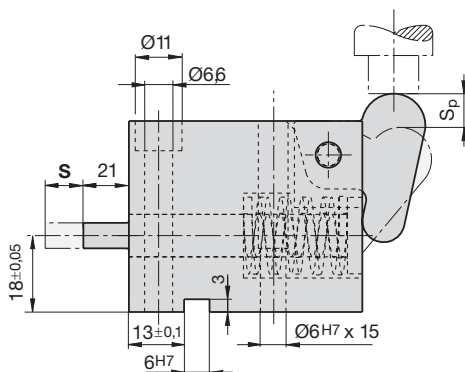
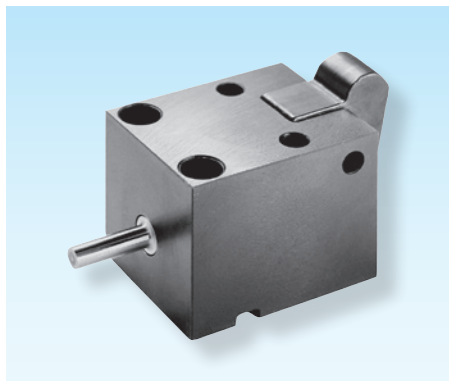


Seitenschiebereinheiten mit Nockensystem

Lateral slide units with cam system

Unités de coulisseau latérales avec came système

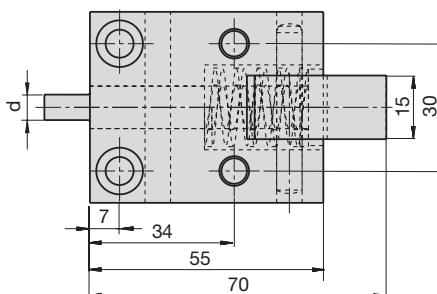


SN5610-750-

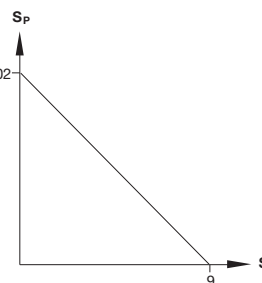
Mat.: HSS (1.3343)
62 ±2HRC¹⁾



SN5610-750-S-d



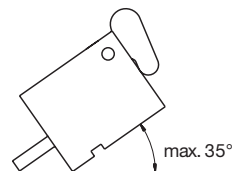
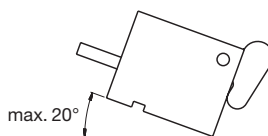
Treiberhub / Pucherstroke / Course de poussoir



Arbeitshub / Working stroke / Course de travail

¹⁾ Schneidstempel
Cutting punch
Poinçon de découpe

Maximale Neigung
Maximum inclination
Inclinaison maximale



S = Hub / Stroke / Course

* bei Bestellung bitte angeben
please indicate in the order
veuillez indiquer dans la commande

S	d	Sp	Max. Arbeitskraft Max. punching force Force de poinçonnage max.	daN	daN	Feder Spring Ressort
9	3,5 - 7*	8,02	750 daN	0	~50	SN2520-20-25