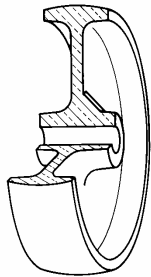


## SERIES 67



### SOLID HIGH TEMPERATURE THERMOSETTING RESIN WHEELS SWIVEL BOLT HOLE BRACKET TYPE "NL"

#### Wheel description

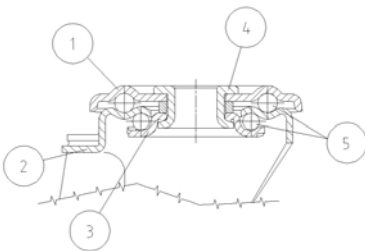


**Tread:** solid high temperature thermosetting resin wheels, resistant to temperatures from -20°C and +300°C.

**Hub:** the plain bearing bore results from a hole in the material forming the centre of the wheel and contains the axle.

#### Bracket description

**Standard duty bracket type NL (max. carrying capacity 400 daN)**



- 1) **Plate:** electrolytically galvanised steel plate
  - 2) **Fork:** electrolytically galvanised steel plate
  - 3) **Ball Racing Ring:** electrolytically galvanised steel plate
  - 4) **King Pin:** incorporated in top plate and cold riveted
  - 5) **Swivel actions:** double ring of greased balls
- Finishing:** electrolytic galvanisation  
**Fitting:** bolt hole