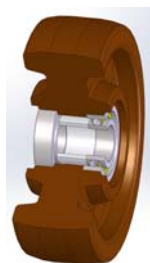


67CC SERIES



SOLID HIGH TEMPERATURE THERMOSETTING RESIN WHEELS WITH BALL BEARINGS

Wheel description



Tread: solid high temperature thermosetting resin wheels, resistant to temperatures from -20°C and +300°C.

Hub: fitted with shielded ball bearings lubricated with a grease for high temperatures