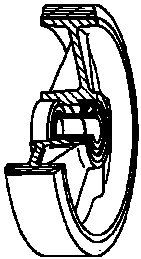


## SERIES 63



### VULKOLLAN® WHEELS, FORGED STEEL CENTRE, SWIVEL TOP PLATE BRACKET TYPE P WITH BRAKE

#### Wheel description



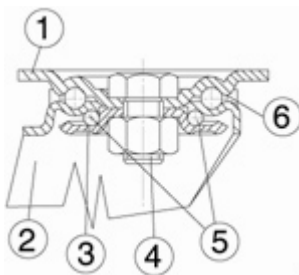
**Tread:** Vulkolla®n polyurethane tread; hardness 93 +/-2 Shore A.

**Centre:** forged steel.

**Hub:** the housing is obtained by moulding and turning and contains ball bearings series Z.

#### Bracket description

##### Heavy duty bracket type P (max. carrying capacity 750 daN)



1) **Plate:** electrolytically galvanised steel plate

2) **Fork:** electrolytically galvanised steel plate

3) **Ball Racing Ring:** electrolytically galvanised steel plate

4) **King Pin:** steel screw class 8.8 and nut

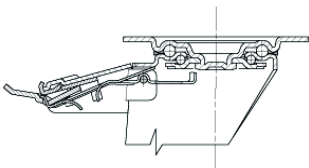
5) **Swivel actions:** double ring of greased balls

6) **Dust seal:** red polyamide

**Finishing:** yellow galvanisation

**Fitting:** top plate

#### Brake description



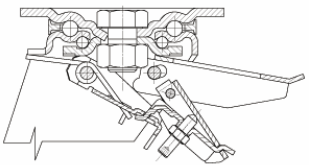
Diameters 80-125 mm

##### Diam. 80-125 mm: Front-locking brake

This brake fully locks wheel and castor rotation.

Thanks to its optimised dimensions and fold-away pedal, the brake is easy to engage and extremely compact.

The hardened carbon steel spring has very high corrosion resistance.



Diameters 150-200 mm

##### Diam. 150-200 mm: Adjustable rear-locking brake

Double-action rear brake that locks the wheel and the castor at the same time. The brake is efficient and easy to use: a simple top-to-bottom movement using the tip of the foot on two independent pedals is all that's needed to engage and release the lock quickly and smoothly. Locking force can be adjusted using an M8 socket screw.