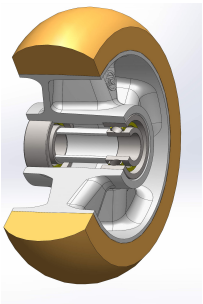


SERIE 65ER



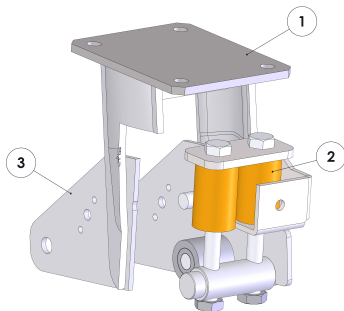
**THICK “TR” POLYURETHANE WHEELS WITH
ERGONOMIC ROUND PROFILE,
ALUMINIUM CENTRE,
FIXED ELECTROWELDED SPRUNG-LOADED BRACKET
TYPE EES MHD**

Wheel description



Tread: Thick TR polyurethane wheels with round ergonomic profile, hardness 95 Shore A.
Centre: cast aluminium
Hub: the housing is obtained by moulding and contains ball bearings series Z.

Bracket description



**Electrowelded sprung-loaded bracket EES MHD-max loading capacity 1000 daN
(damping up to 400 daN)**

- 1) Electrolytically galvanised top plate with deep-drawn legs electrowelded to the flange
- 2) Polyurethane springs
- 3) Internal moving fork: deep-drawn legs electrowelded to the tube