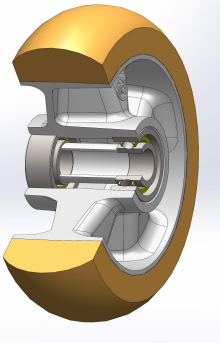


SERIE 65ER



**THICK “TR” POLYURETHANE WHEELS WITH
ERGONOMIC ROUND PROFILE,
ALUMINIUM CENTRE,
SWIVEL TOP PLATE ELECTROWELDED SPRUNG-LOADED
BRACKET TYPE EES MHD**

Wheel description



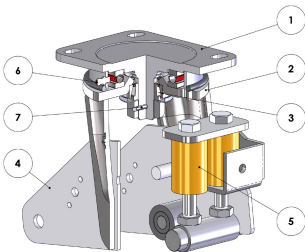
Tread: Thick TR polyurethane wheels with round ergonomic profile, hardness 95 Shore A.

Centre: cast aluminium

Hub: the housing is obtained by moulding and contains ball bearings series Z.

Bracket description

Electrowelded sprung-loaded bracket EES MHD -max load capacity 1000 daN (damping up to 400 daN)



- 1) Top plate: electrolytically galvanised forged steel with integrated pin.
- 2) Main fork: deep-drawn legs electrowelded to the flange and electrolytically galvanised U-shaped component electrowelded to the legs.
- 3) Swivel actions: axial ball bearing and tapered roller bearing
- 4) spring-hinged plates: plates electrowelded to the axle
- 5) Polyurethane springs
- 6) Grease nipple
- 7) Anti-loosening locknut system