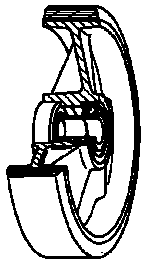


## SERIES 66



**“TR” POLYURETHANE WHEELS,  
POLYAMIDE 6 CENTRE,  
SWIVEL BOLT HOLE BRACKET TYPE “NL” WITH BRAKE**

### Wheel description



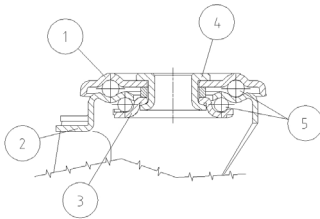
**Tread:** “TR” polyurethane tread, hardness 95+/-3 Shore A; excellent rolling resistance and elasticity, highly resistant to wear and to tearing.

**Centre:** polyamide 6.

**Hub:** the hub is available with plain bearing and with roller bearing.

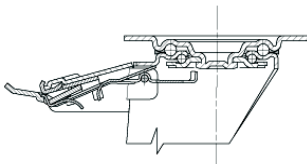
### Bracket description

**Standard duty bracket type NL (max. carrying capacity 400 daN)**



- 1) **Plate:** electrolytically galvanised steel plate
  - 2) **Fork:** electrolytically galvanised steel plate
  - 3) **Ball Racing Ring:** electrolytically galvanised steel plate
  - 4) **King Pin:** incorporated in top plate and cold riveted
  - 5) **Swivel actions:** double ring of greased balls
- Finishing:** electrolytic galvanisation  
**Fitting:** bolt hole

### Brake description



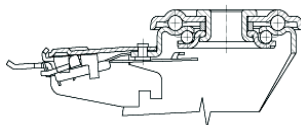
**Diam. 80-150 mm**

#### Front-locking brake

This brake fully locks wheel and castor rotation.

Thanks to its optimised dimensions and fold-away pedal, the brake is easy to engage and extremely compact.

The hardened carbon steel spring has very high corrosion resistance.



**Diam. 150-200 mm**