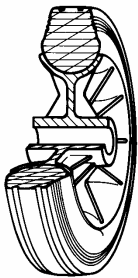


SERIES 22



STANDARD RUBBER WHEELS POLYPROPYLENE CENTRE SWIVEL BOLT HOLE BRACKET TYPE “NLX” WITH BRAKE

Wheel description



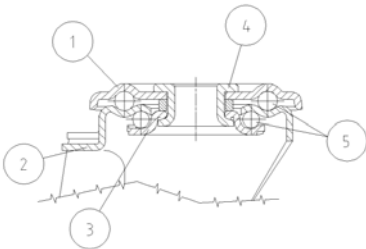
Tread: Standard non-marking rubber tread; hardness 80 Shore A.

Centre: polypropylene.

Hub: the hub is available with plain bore.

Bracket description

Standard duty bracket type NLX (max. carrying capacity 400 daN)



1) **Plate:** AISI 304 stainless steel

2) **Fork:** AISI 304 stainless steel

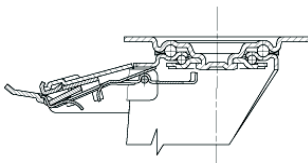
3) **Ball Racing Ring:** AISI 304 stainless steel

4) **King Pin:** incorporated in top plate and cold riveted

5) **Swivel actions:** double ring of greased balls

Fitting: bolt hole

Brake description



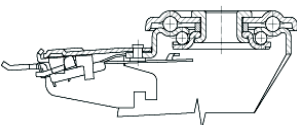
Diam. 80-150 mm

Front-locking brake

This brake fully locks wheel and castor rotation.

Thanks to its optimised dimensions and fold-away pedal, the brake is easy to engage and extremely compact.

The stainless steel spring has very high corrosion resistance.



Diam. 150-200 mm