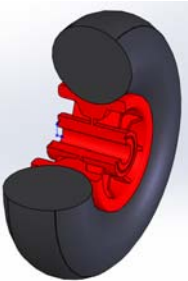


SERIES 82AF



**PUNCTURE-PROOF PNEUMATIC WHEELS WITH
POLYPROPYLENE CENTRE
FIXED BRACKET TYPE “NL”**

Wheel description



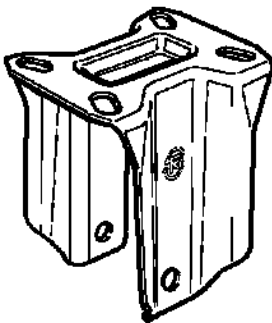
Tread: in expanded polyurethane.

Centre: in red polyurethane.

Hub: with cylindrical roller bearing with plastic cage.

Bracket description

Light duty bracket (max. carrying capacity 70 daN)



The bracket is made by an electrolytically galvanised steel fork.