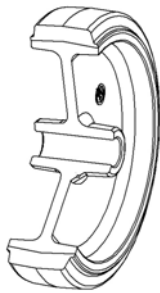


SERIES 73



SIGMA ELASTIC RUBBER WHEELS POLYAMIDE 6 CENTRE SWIVEL TOP PLATE BRACKET TYPE "NL" WITH BRAKE

Wheel description



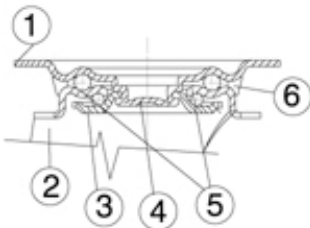
Tread: Sigma Elastic rubber tread; hardness 70+/-3 Shore A.

Centre: polyamide 6.

Hub: The hub is available with plain bore, with roller bearing and with ball bearing.

Bracket description

Standard duty bracket type NL (max. carrying capacity 400 daN)



1) **Plate:** electrolytically galvanised steel plate

2) **Fork:** electrolytically galvanised steel plate

3) **Ball Racing Ring:** electrolytically galvanised steel plate

4) **King Pin:** incorporated in top plate and cold riveted

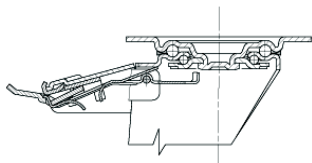
5) **Swivel actions:** double ring of greased balls

6) **Dust seal:** orange polyethylene

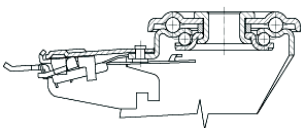
Finishing: electrolytic galvanisation

Fitting: top plate

Brake description



Diameters 80-150 mm



Diameters 150-200 mm

Front-locking brake

This brake fully locks wheel and castor rotation.

Thanks to its optimised dimensions and fold-away pedal, the brake is easy to engage and extremely compact.

The hardened carbon steel spring has very high corrosion resistance.