

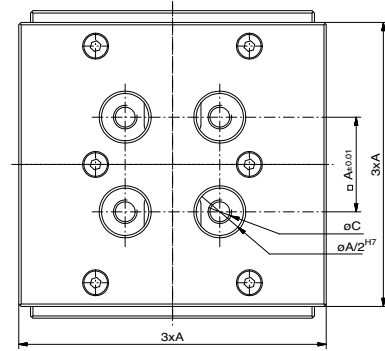
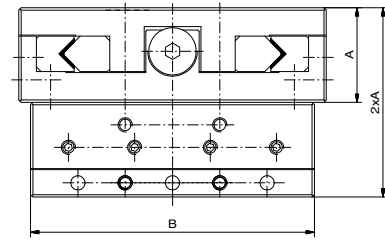
## Cross guiding slide, heavy duty

guided with slide bearings

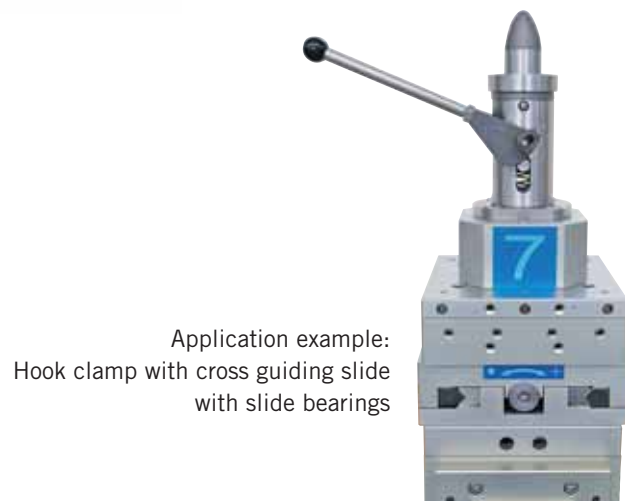
| Nr.   | A (AF) | B   | C   | max. load | shift    |       |
|-------|--------|-----|-----|-----------|----------|-------|
| 92031 | 25     | 79  | M6  | 75 kg     | +/- 12,5 | 900   |
| 92425 | 40     | 130 | M10 | 225 kg    | +/- 20   | 4.000 |
| 92426 | 50     | 158 | M12 | 375 kg    | +/- 25   | 7.000 |

guided with roller bearings

| Nr.    | A (AF) | B   | C   | max. load | shift  |       |
|--------|--------|-----|-----|-----------|--------|-------|
| 280498 | 25     | 79  | M6  | 150 kg    | +/- 13 | 900   |
| 280499 | 40     | 130 | M10 | 450 kg    | +/- 21 | 4.000 |
| 280500 | 50     | 158 | M12 | 750 kg    | +/- 26 | 7.000 |



Version with roller bearings



Application example:  
Hook clamp with cross guiding slide  
with slide bearings



**ALUFIX CLASSIC** elements can be anodized in different colours. The colour natural is standard, black (-1) is available as an alternative. Other colours on request.