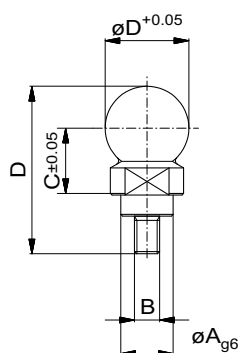


## ALUFIX – DEA Five U-nique Adapter tip, with nub connection

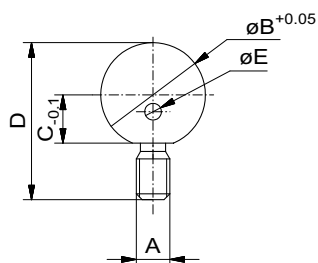
Nr.	System	A	B	C	D	
97439	AF25	87,5	12,5	25	25	210



## Reference ball

for Alufix bore

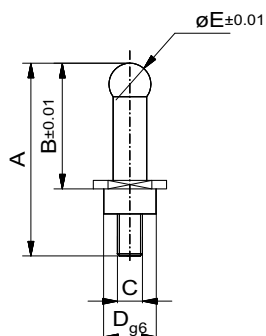
Nr.	A	B	C	D	$\phi D$	Material	
28403	12,5	M6	16	39	18	Aluminium	15
33035	12,5	M6	16	39	18	Steel	90
33516	20	M10	24	59,5	27	Aluminium	80
33517	20	M10	24	59,5	27	Steel	150
83117	25	M12	32	60,5	36	Aluminium	140
84344	25	M12	32	60,5	36	Steel	340



## Reference ball

with thread

Nr.	A	B	C	D	E	Material	
34150	M8	25	11,5	37,5	4	Steel	64



## Support ball

Nr.	A	B	C	D	E	Material	
25130	46	30	M6	12,5	10	Steel	24